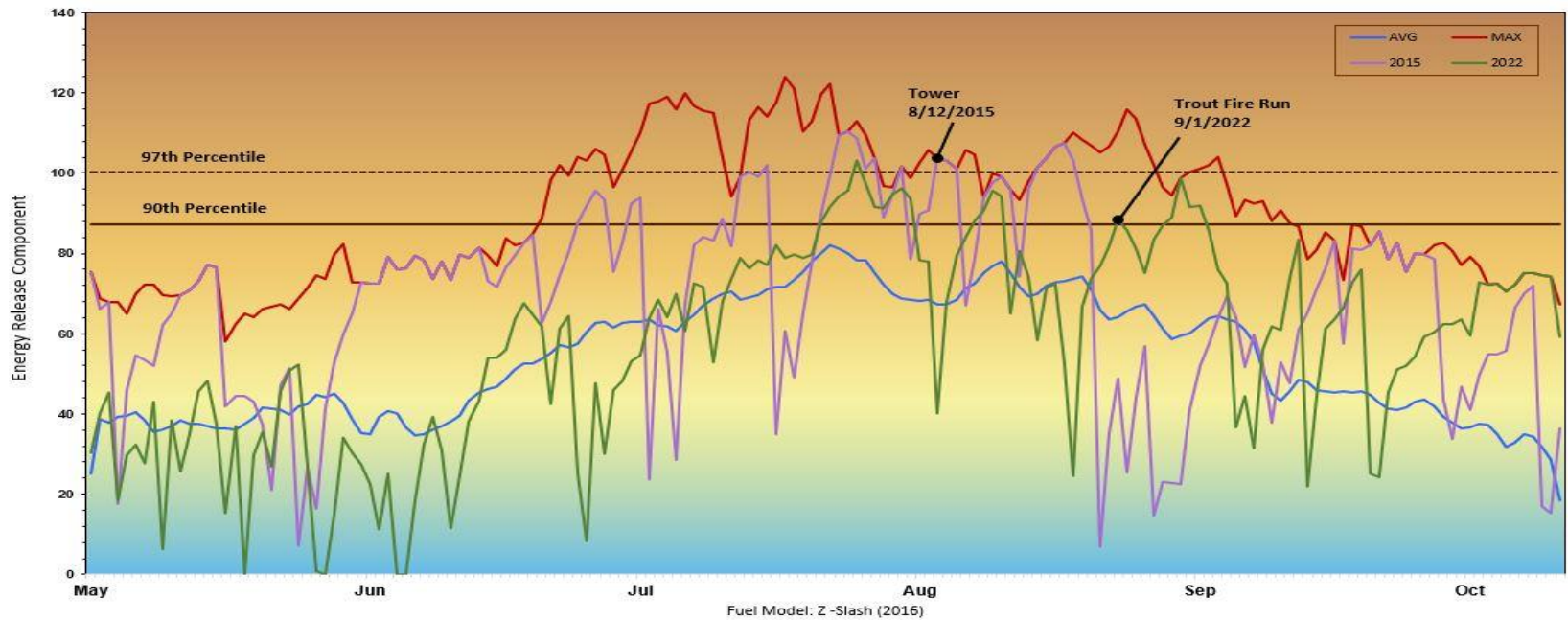


North Mountains-North Idaho Zone



FIRE DANGER AREAS: NIZ-North Mountains

FORECAST ZONE: NOAA ID101

North Mountain FDRA SIG RAWs

100107 Saddle Pass

100204 Priest Lake

100208 Hoodoo

Stations meet NWCG Weather Station Standards



Daily Indices

GRAPH INTERPRETATION: Energy Release Component (ERC)

ERC gives seasonal trends calculated from temperature, humidity, and precipitation duration.

EXTREME – Use Extreme Caution

HIGH – Watch for Change

MODERATE – Lower Potential, but always be aware.

AVG – Mean ERC by day, over 15 years.

MAX – Highest ERC by day for 2009-2023.

90th Percentile – 10% of 2445 days from 2009-2023 had an ERC above 87.

97th Percentile – 3% of 2445 days from 2009-2023 had an ERC above 100.

LOCAL THRESHOLDS – WATCHOUT: Combinations of any of these factors can greatly increase fire behavior.

20' Wind Speed > 15 mph

RH < 20%

Temperature > 80 F

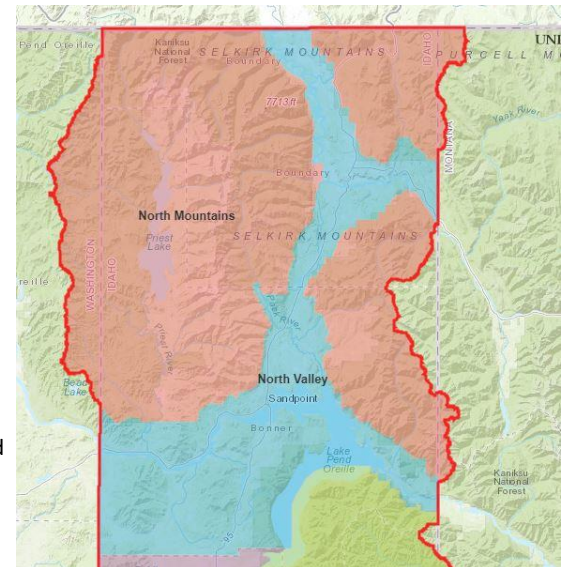
1000-Hour Fuel Moisture < 15%

PAST EXPERIENCE:

NM FDRA often has ignitions resulting in holdovers or small fires that do not have significant growth for several days. Be aware when weather/fuels conditions align, even without recent ignitions or recent growth.

2015 Tower fire (25,685 acres) ignition 8/12/2015 under drought conditions. Passing cold front with wind gusts > 25 mph, temps > 90F and RH < 15% produced a 6.5-mile 1 day run in heavy timber.

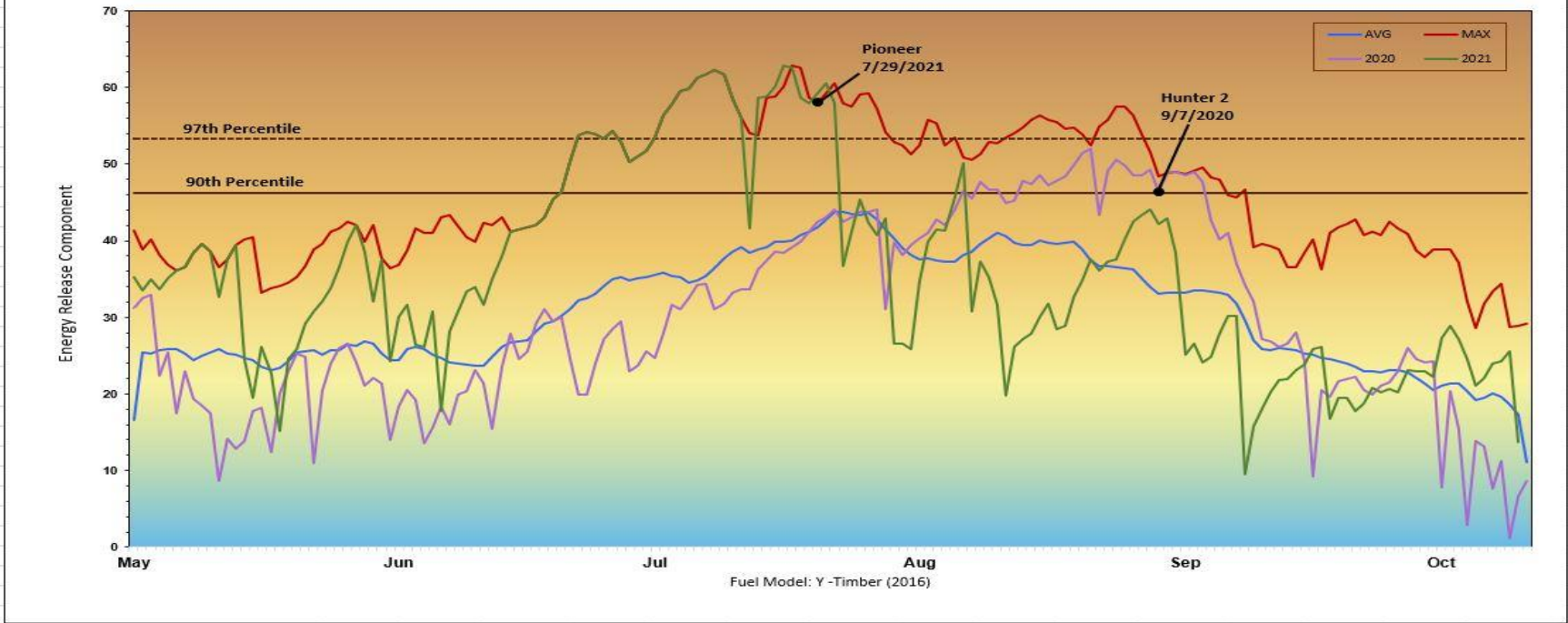
2022 Trout fire (4,785 acres) ignition 8/21/2022. First significant run 9/1/2022, Bonner RAWs recording; temps > 95F, RH < 25%, wind 10 mph gust to 19 with ERC @ 90%.



Responsible Agency: USFS ID-IPF

Pocket Card Created: 5.1.2024

North Valleys-North Idaho Zone



FIRE DANGER AREAS: NIZ-North Valleys

FORECAST ZONE: NOAA ID101

North Valleys FDRA SIG RAWs

100101 Bonners

100208 Hoodoo

Stations meet NWCG Weather Station Standards



Daily Indices

GRAPH INTERPRETATION: Energy Release Component (ERC)

ERC gives seasonal trends calculated from temperature, humidity, and precipitation duration.

EXTREME – Use Extreme Caution

HIGH – Watch for Change

MODERATE – Lower Potential, but always be aware.

AVG – Mean ERC by day, over 15 years.

MAX – Highest ERC by day for 2009-2023.

90th Percentile – 10% of 2445 days from 2009-2023 had an ERC above 46.

97th Percentile – 3% of 2445 days from 2009-2023 had an ERC above 53.

LOCAL THRESHOLDS – WATCHOUT: Combinations of any of these factors can greatly increase fire behavior.

20' Wind Speed > 15 mph

RH < 20%

Temperature > 80 F

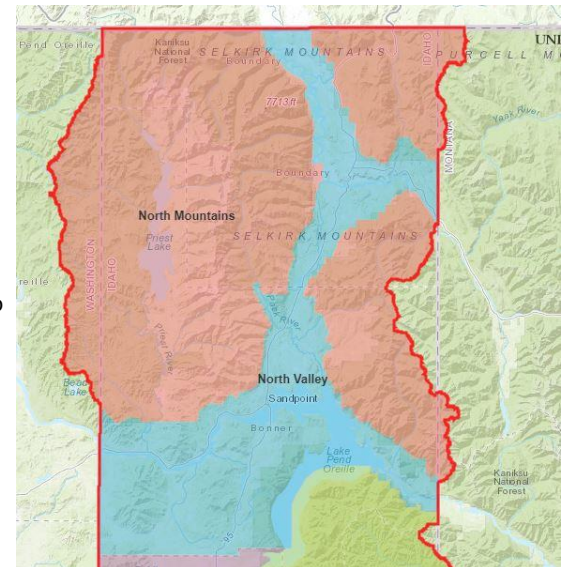
1000-Hour Fuel Moisture < 15%

PAST EXPERIENCE:

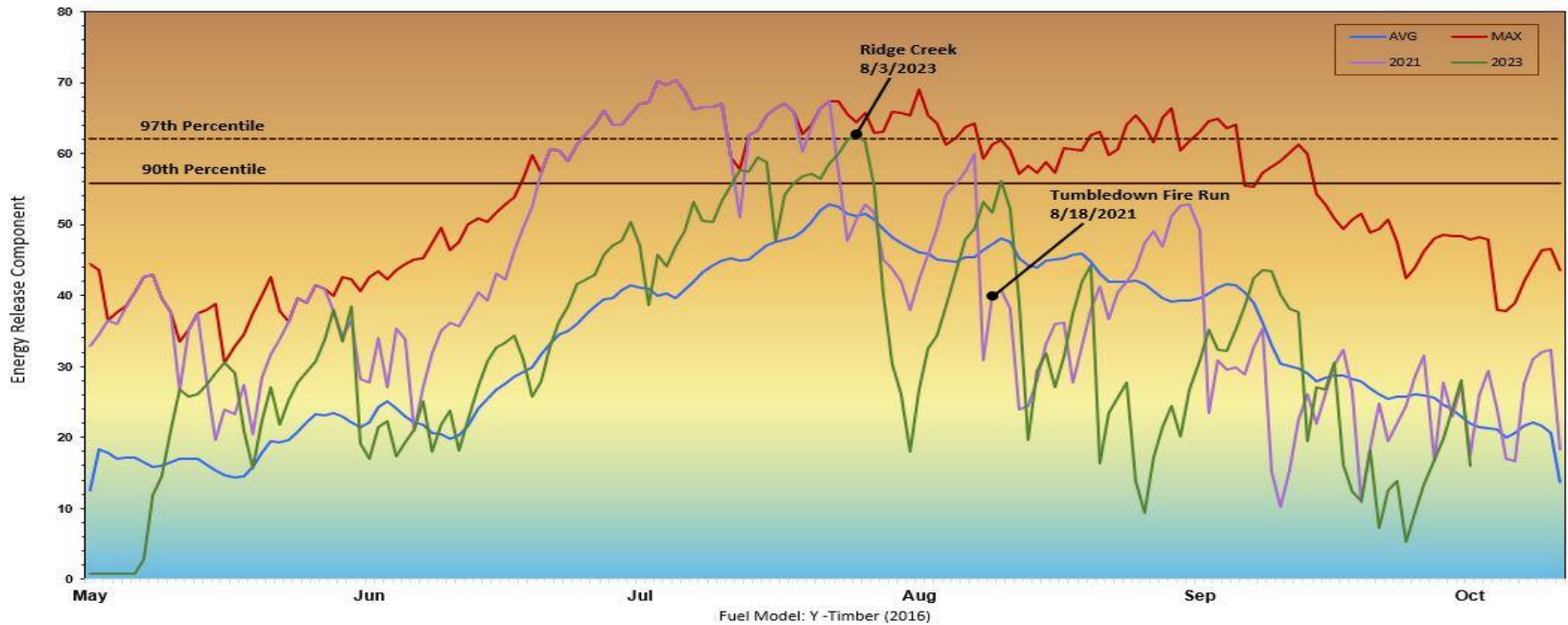
NV FDRA, pay special attention to WUI Watch Outs. In addition to ERC over 90th percentile, pay attention to Burning Index (BI) over the 85th percentile.

2020 Hunter 2 fire (684 acres) ignition 9/7/2020 with several hundred acres and long-range spotting during initial attack. 9/7/20 conditions; ERC @ 90%, BI above 90%, and 1000-Hr fuels @ 11%.

2021 Pioneer fire (355 acres) ignition 7/29/2021 with ERC above 97th and 1000-Hr fuels @ 11%. 6/22 through 7/20 2021 ERC set max ERC level.



South Mountains-North Idaho Zone



FIRE DANGER AREAS: NIZ-South Mountains

FORECAST ZONE: NOAA ID101

South Mountains FDRA SIG RAWS

100424 Lines Creek

100425 Magee Peak

Stations meet NWCG Weather Station Standards



Daily Indices

GRAPH INTERPRETATION: Energy Release Component (ERC)

ERC gives seasonal trends calculated from temperature, humidity, and precipitation duration.

EXTREME – Use Extreme Caution

HIGH – Watch for Change

MODERATE – Lower Potential, but always be aware.

AVG – Mean ERC by day, over 15 years.

MAX – Highest ERC by day for 2009-2023.

90th Percentile – 10% of 2445 days from 2009-2023 had an ERC above 56.

97th Percentile – 3% of 2445 days from 2009-2023 had an ERC above 62.

LOCAL THRESHOLDS – WATCHOUT: Combinations of any of these factors can greatly increase fire behavior.

20' Wind Speed > 15 mph

RH < 20%

Temperature > 80 F

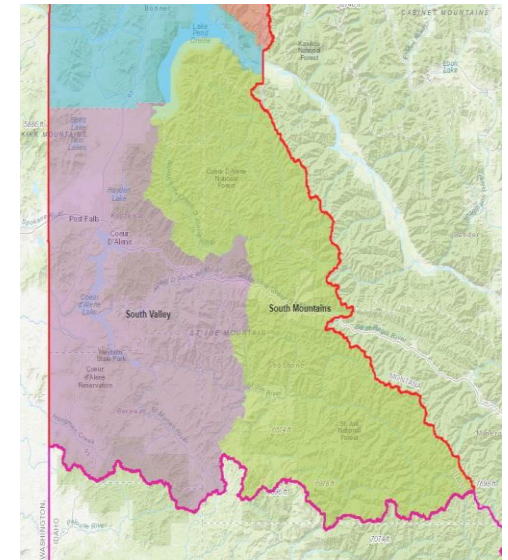
1000-Hour Fuel Moisture < 15%

PAST EXPERIENCE:

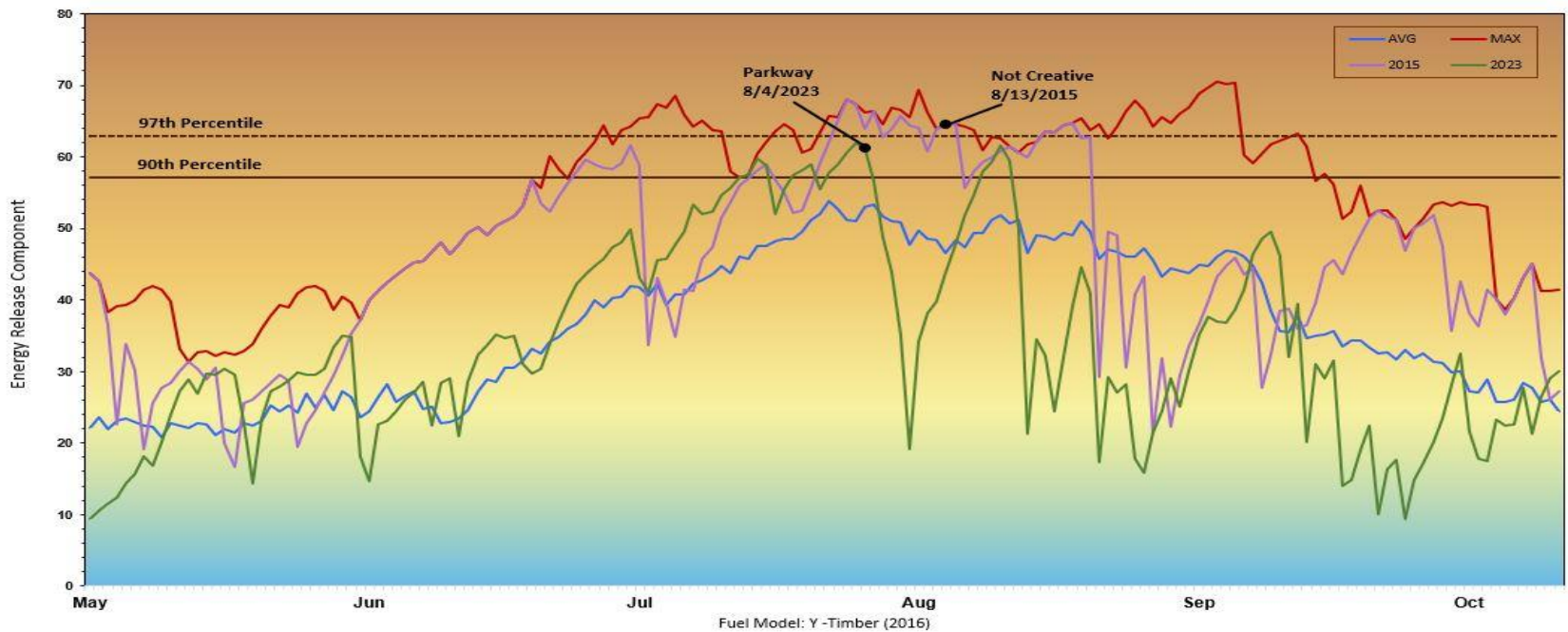
SM FDRA often has ignitions resulting in holdovers or small fires that do not have significant growth for several days. Be aware when weather/fuels conditions align, even without recent ignitions or recent growth.

2021 Tumbledown fire (11,121 acres) ignition 7/7/21, several mile wind driven run 8/18/21. ERC on 7/7 was above 97% setting new max. 8/18 1000-Hr @ 12%.

2023 Ridge Creek fire (4,474 acres). Grew several hundred acres in first period. ERC was above the 97%. Magee RAWs 1400 8/3; 84 F, 16% RH, wind 4 mph, and no precipitation 7/13-8/3/2023.



South Valleys-North Idaho Zone



FIRE DANGER AREA: NIZ-South Valleys

FORECAST ZONE: NOAA ID101

South Valleys FDRA SIG RAWs

100423 Nuckols

1006003 Potlatch

Stations meet NWCG Weather Station Standards



Daily Indices

GRAPH INTERPRETATION: Energy Release Component (ERC)

ERC gives seasonal trends calculated from temperature, humidity, and precipitation duration.

EXTREME – Use Extreme Caution

HIGH – Watch for Change

MODERATE – Lower Potential, but always be aware.

AVG – Mean ERC by day, over 15 years.

MAX – Highest ERC by day for 2009-2023.

90th Percentile – 10% of 2445 days from 2009-2023 had an ERC above 57.

97th Percentile – 3% of 2445 days from 2009-2023 had an ERC above 63.

LOCAL THRESHOLDS – WATCHOUT: Combinations of any of these factors can greatly increase fire behavior.

20' Wind Speed > 15 mph

RH < 20%

Temperature > 80 F

1000-Hour Fuel Moisture < 15%

PAST EXPERIENCE:

SV FDRA, pay special attention to WUI Watch Outs. In addition to ERC over 90th percentile, pay attention to Burning Index (BI) over the 85th percentile.

2015 Not Creative fire (135 acres) had daily record setting ERCs for two months, coupled with temps near 100F and RHs in mid-teens allowed for significant drying of fuels. Record low 1000-hr fuel moisture (8%) contributed to spread in dense canopy forest on a north aspect.

2023 Parkway fire (80 acres) burned actively in WUI dry ponderosa pine stand. 1000-Hr fuel were at 11%, with ERC above the 90th percentile.

